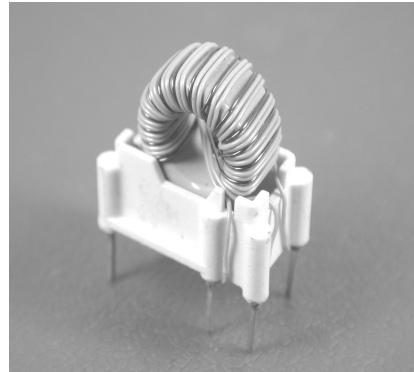


# ICI-86T SERIES THT CURRENT SENSE TRANSFORMERS

## FEATURES

- MEET UL AND C-UL.
- 3000 Vrms GATE TO DRIVE WINDING TEST.
- USEFUL OPERATING FREQUENCY FROM 50 KHz TO 500KHz.
- MOST POPULAR WINDING CONFIGURATIONS.



## TEST CONDITIONS

- Inductance ----- 100KHz/200mV

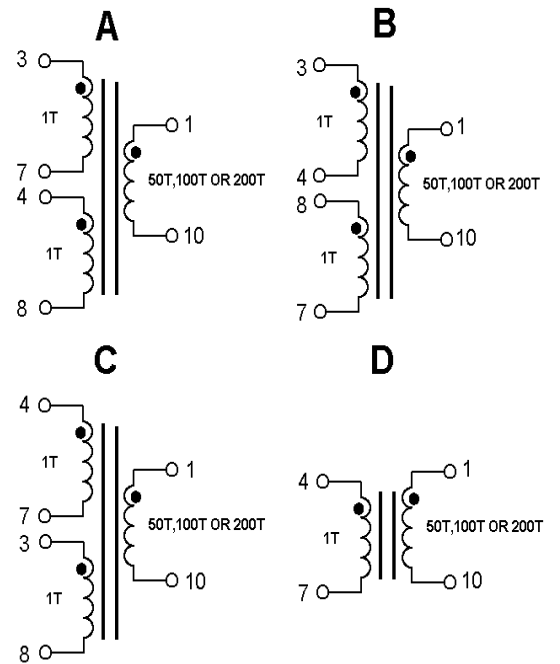
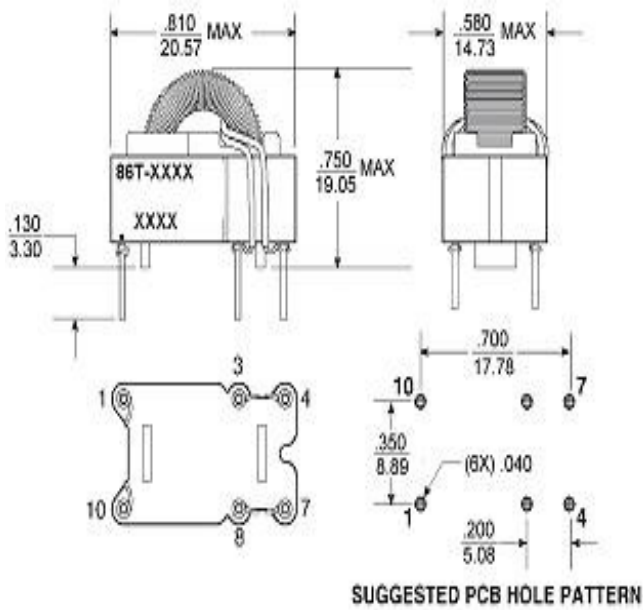
## ELECTRICAL SPECIFICATIONS @25°C-Operating temperature -30°C TO +130°C

PART NUMBER	TURNS RATIO	SECONDARY INDUCTANCE (1-10)(mH MIN)	DCR SEC (1-10) (ΩMAX)	DCR SEC (1-10) (ΩMAX)	DCR SEC (1-10) (ΩMAX)	HI-POT (Vrms)	REFERENCE DATA				CALCULATION DATA	
							RT	Ipk (Amps)	DROOP (%)	MAX FLUX DENSITY	Kb	Req (mΩ)
							ICI86T-763A	1:1:200	76	2.8	2.15	2.15
ICI86T-193A	1:1:100	19	1.4	2.15	2.15	3000	100	35	1.98	2000	68.49	0.8
ICI86T-502A	1:1:50	5	0.7	2.15	2.15	3000	15	36	1.19	2000	273.97	0.75

## MARKINGS AND DIMENSION

## SCHEMATIC

# ICI-86T SERIES THT CURRENT SENSE TRANSFORMERS



Dimensions: inches/mm

Unless otherwise specified, all tolerances are  $\pm .010/\pm 0.25$