

## Wide Input Voltage Range 10 Watt Dc-Dc Converter



### FEATURES:

- 10W DIL PACKAGE
- 4:1 WIDE INPUT RANGE
- 100% BURNED IN
- HIGH EFFICIENCY
- UL94V-0 PACKAGE MATERIAL
- CUSTOM SOLUTIONS AVAILABLE
- RoHS COMPLIANT
- 3 YEARS WARRANTY
- Remote Control:On/Off



Specifications typical at TA=25°C, nominal input voltage and rated output current unless otherwise specified

Part Number	Input Voltage	Input Current		Output Voltage	Output Current	Efficiency
	Vdc	No-Load (mA TYP)	Full Load (mA TYP)	Vdc	Full Load (mA)	%TYP
ICI68DW10-24S03RNL	9-36	30	503	3.3	3000	82
ICI68DW10-24S05RNL	9-36	30	508	5	2000	82
ICI68DW10-24S12RNL	9-36	30	502	12	833	83
ICI68DW10-24S15RNL	9-36	30	505	15	670	83
ICI68DW10-24D05RNL	9-36	30	502	±5	±1000	83
ICI68DW10-24D12RNL	9-36	30	506	±12	±420	83
ICI68DW10-24D15RNL	9-36	30	512	±15	±340	83
ICI68DW10-48S03RNL	18-75	30	252	3.3	3000	82
ICI68DW10-48S05RNL	18-75	30	254	5	2000	82
ICI68DW10-48S12RNL	18-75	30	251	12	833	83
ICI68DW10-48S15RNL	18-75	30	252	15	670	83
ICI68DW10-48D05RNL	18-75	30	251	±5	±1000	83
ICI68DW10-48D12RNL	18-75	30	253	±12	±420	83
ICI68DW10-48D15RNL	18-75	30	256	±15	±340	83

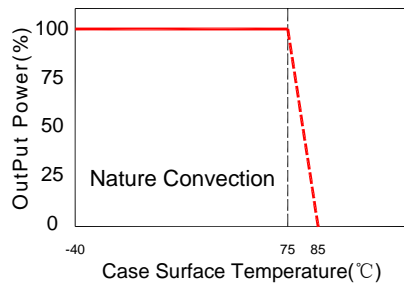
Input Specifications						
Parameters	Conditions	Min	Typ	Max	Units	
Voltage Types				4:1		
Filter	Pi Network					
Protection	Fuse Recommended					

Output Specifications (Temperature Coefficient : ±0.05%/°C)						
Parameters	Conditions	Min	Typ	Max	Units	
Voltage Tolerance	Single/Dual			±2	%	
Short Circuit/ Restart	Continuous/ Automatic					
Over Load Protection			150		%	
Line Regulation	High Line to Low Line			±0.5	%	
Load Regulation	Single & Dual (F.L-25%F.L)			±0.5	%	
Minimum Load	10% of Full Load					
Ripple & Noise	BW=DC To 20MHz (with 1uF Cap.)			100	mVp-p	
Transient response setting time	current change from 25% to 100%			350	us	

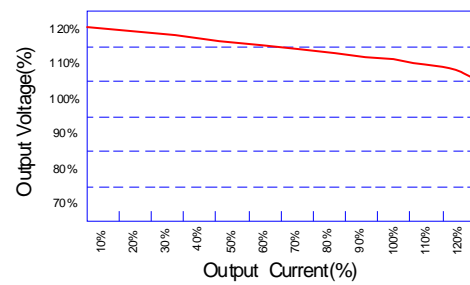
General Specifications						
Parameters	Conditions	Min	Typ	Max	Units	
Isolation Resistance	500Vdc	1000			MΩ	
Switching Frequency			400		KHz	
Operating Temperature		-40		85	°C	
Humidity	Non Condensing			95	%	
Cooling	Free air Convection					
Case material	Five-Side Shielded Case					
Weight			17.5		g	
Dimensions	Appearance size		31.8X20.6X10.16		mm	
Potting Material			Epoxy (UL94V-0 rated)			
Radiated Emissions	EN55022		CLASS A			
Conducted Emissions	EN55022		CLASS A			
Efficiency		80			%	
Isolation Voltage	For 10 seconds			1500	VDC	
MTBF	MIL-HDBK-217F @25°C , Ground Benign	900000			Hours	
Storage Temperature		-55		+125	°C	
Case Temperature				+95	°C	

## Wide Input Voltage Range 10 Watt Dc-Dc Converter

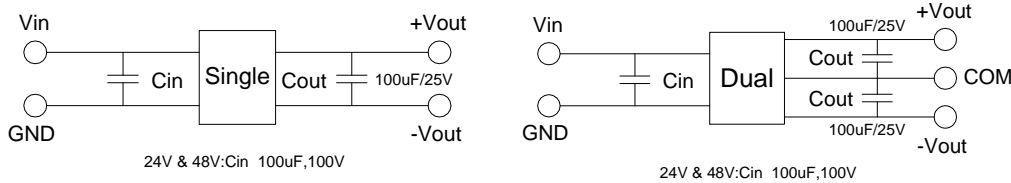
### Temperature Derating Graph



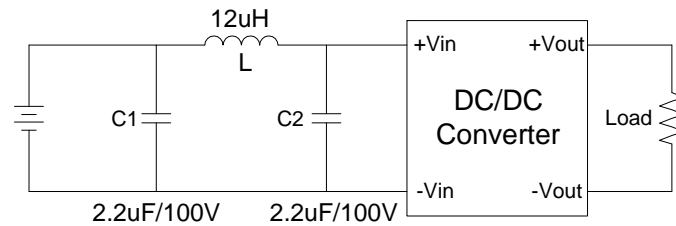
### Tolerance Envelope Graph



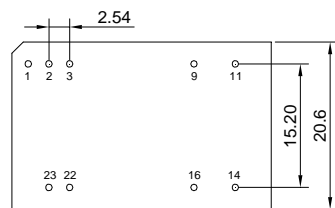
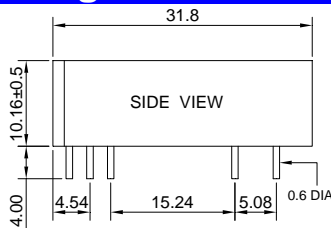
### Recommended Test Circuit



Input filter components (C1, C2, L) are used to help meet conducted emissions (EN55022 class A) requirement for the module. These components should be mounted as close as possible to the module; and all leads should be minimized to decrease radiated noise.

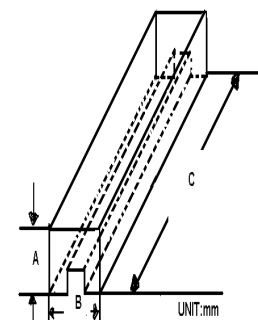


### Markings and dimensions



UNIT:mm XX.X±0.5 XX.XX±0.25  
Pin Size Tolerance: 0.6Φ ±0.05mm

### Packaging



SIZE(mm)		
A	B	C
18.71	23.00	522

### PIN Connection

PIN	1	2,3	9	11	14	16	22,23
SINGLE	Remote On/Off	-Vin	NC	NC	+Vout	-Vout	+Vin
DUAL	Remote On/Off	-Vin	Common	-Vout	+Vout	Common	+Vin