



ICI4.0-12S05SM

DC DC Converter

Features

- **Wide input voltage range 8-18Vdc**
- **Miniature Size (1.1" x .94" x 0.25")**
- **Efficiency to 80%**
- **PI input filter**
- **2250Vdc Isolation (IEC60601-1) Basic**
- **SMT and Pick & Placeable**

Electrical Specifications

Input Voltage/Range..... 8-18Vdc
 Output Voltage..... 5.00Vdc
 Output Current.....750 mA
 Output Voltage Accuracy..... +/- 1% Typ
 Line Regulation..... +/- 0.5%
 Load Regulation (single)..... +/- 0.5%
 Efficiency..... 80%
 OVP.....6.8V, clamp type

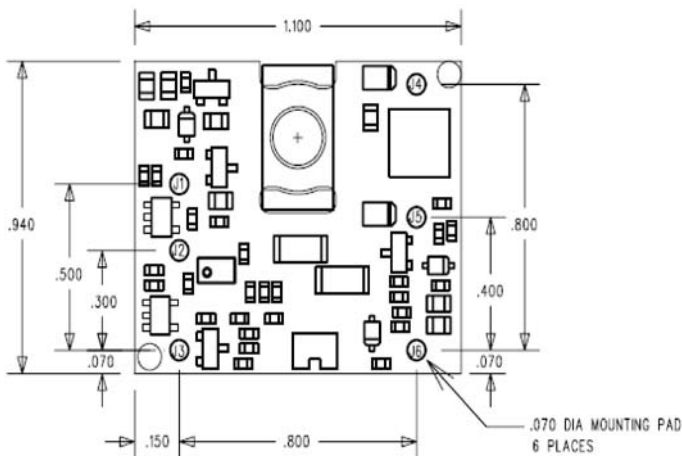
The ICI-4.0 series of DC-DC converters have been designed as an Industry Standard Pinout solution for a wide range of applications where small size, light weight and ease of assembly are needed. The ICI4.0 is a cost effective product designed to meet IEC60601-1 high isolation requirements. The ICI4.0 also incorporates input under-voltage lockout, output OVP and short circuit protection. Available in SMT or through hole mounting.

General Specifications

Switching Frequency.....500KHz Typ.
 Output Ripple & Noise.....20mVp-p(20MHz B
 Isolation Voltage.....2200VDC
 Isolation Resistance.....1 gigohm
 Storage Temperature Range.....-55C to 100C
 Operating Temperature Range... -40C to +71C
 Short Circuit Protection..... Continuous



PINOUT	
J1	+INPUT
J2	-INPUT
J3	ON/OFF
J4	+VOUT
J5	TRIM
J6	-VOUT



VIEW FROM COMPONENT SIDE

